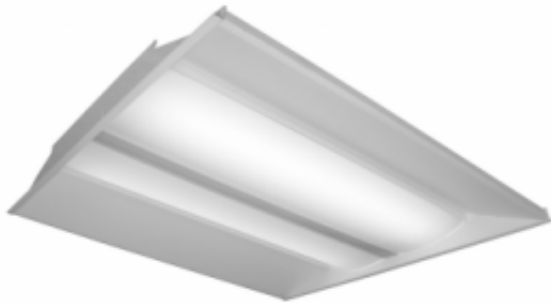




## Recessed Troffer LED



The RT-LL offers the look and feel of a fluorescent luminaire - subtle soft direct elements, interest and depth across the ceiling plane - with a contemporary look that blends with today's commercial spaces. The extruded acrylic lens with softening overlay provides a diffused luminance, with the effective combination of excellent light transmission and haze.

### Features and Benefits

- High performance optical engine delivers main beam focus through the optically designed acrylic lens
- Linear ribbed acrylic lens with Lumieofi overlay manages the balance of efficiency and aesthetics
- Linear arrayed LED modules provide diffuse, but effective illumination
- LED light engine (optional) by Osram Sylvania, Philips, and others
- LED drivers deliver dimming capability

### Application

- Recessed commercial applications
- Offices
- Hospitals
- Schools
- Standard 15/16" inverted T-Bar grid ceilings

### Certifications



Made in the USA

### Specifications

MODEL#	DIMENSIONS (FT)	WATTAGE	EFFICACY	CRI	CCT	LIFE	WARRANTY	VOLTAGE	UL	DLC
RT22-LL-3035	2x2	30	99.7	84.3	3500	50,000	5 Years	120-277V	X	
RT22-LL-4044	2x2	40	99.7	84.3	4400	50,000	5 Years	120-277V	X	
RT24-LL-5535	2x4	52.1	109.6	84.4	3545	50,000	5 Years	120-277V	X	X
RT24-LL-5540	2x4	52.1	109.6	84.4	4000	50,000	5 Years	120-277V	X	X